



SHINING 3D[®]
FOR MORE SHINING IDEAS

EP-M150 3D PRINTER METAL POWDER BED FUSION

Compact and user friendly metal 3D printer for seamless high resolution printing



FEATURES

SHINING 3D's EP-M150 is the most concise and competitive entry level metal 3D printer in the industry. Equipped with powerful 200W fiber laser and possibility to upgrade it to dual laser system makes EP-M150 a high speed, performance delivering metal 3D printer.

EP-M150 is an amalgam of Intuitively designed compact footprint, super simplified user-interface and more than 10 security technologies in one machine. With a small laser facula and possibility to attain really diminished layer thickness up-to 20 μm , coupled with Shining 3D's complete open system, EP-M150 gives all-round freedom and enhanced results in various areas of small to medium scale metal applications, such as research institutes working on novel materials and parameters development, medical industry and ornamental industry.

High Precision Printing & High Efficiency

- Small laser facula and reduced layer thickness guarantees enhanced precision printing and high quality parts.
- Intelligent powder coating method and faster scanning speed ensures high speed printing.
- Precise oxygen control and unique scanning path technology yields high-quality printing.

Low-cost Operation

- Improved powder feeding and sieving system enables high material utilization.
- Gas consumption < 0.8L/min (Printing period).
- Optimized chamber structure and excellent sealing properties minimize gas consumption.

Easy Maintenance

- Intuitive user interface.
- Optimized structural design for easier maintenance.

High Safety

- Integrates more than 10 security technologies.
- Working environment and real-time gas monitoring.



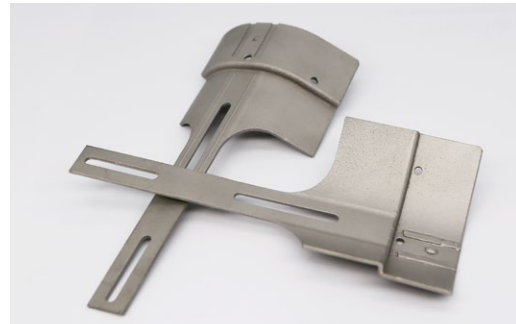
Healthcare
Spinal Implant



Healthcare
Lumbar Interbody Fusion Cage System



Healthcare
Implant



Healthcare
Parts of Medical Devices



Industrial Manufacturing
Conformal Cooling Channel



Product Customization
Jewelry

TECHNICAL SPECIFICATIONS

EP-M150

| | |
|--------------------|---|
| Optical System | Single-200W/500W or Dual-2*200W (Optional), Fiber laser |
| Spot Size | 40-60 μ m |
| Max Scan Speed | 8m/s |
| Build Volume | Φ 150mmx120mm |
| Layer Thickness | 20-100 μ m |
| Materials | Titanium Alloy, Aluminium Alloy, Nickel Alloy, Maraging Steel, Stainless Steel, Cobalt Chrome, Copper Alloy, etc. |
| Gas Supply | Ar/N ₂ |
| Power Supply | 220V, 12A, 50~60Hz, 3.5KW |
| Input Data | STL or other convertible file |
| Machine Weight | Around 900kg |
| Dimensions (W*D*H) | 1750*799*1828mm ³ |

* Notice: SHINING 3D reserves the right to explain any alteration of the specifications and pictures.