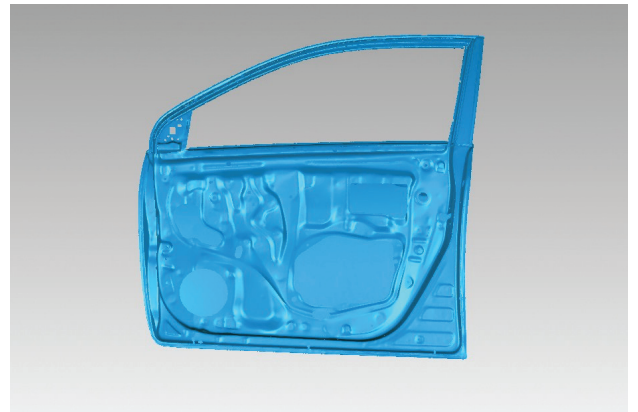
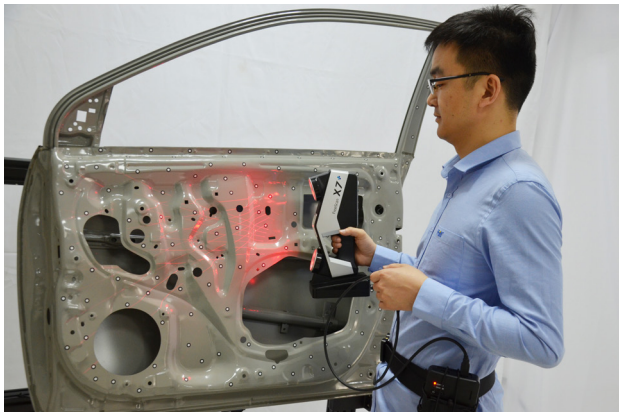
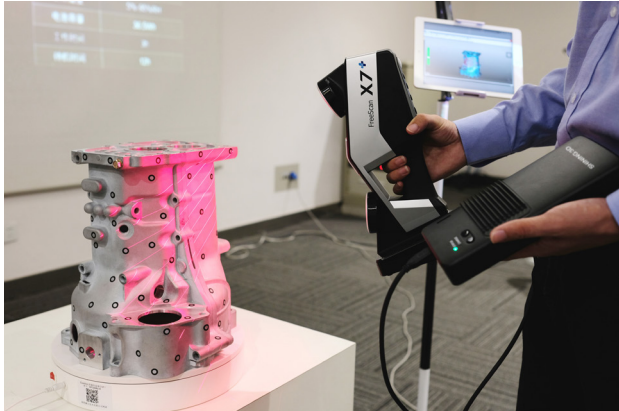




SHINING 3D®

WIRELESS FREESCAN X5+/X7+ METROLOGY 3D SCANNER





GO WIRELESS

Redefining the portability of handheld 3D scanners.
Brings you true freedom in 3D scanning.

- **UNLIMITED 3D SCANNING**

Without the need of cables to connect to computers, you can enjoy complete freedom of 3D scanning.

- **REAL-TIME VISUALIZATION**

Real-time data display on your smartphone or tablet, for ease of scanning of large objects and scenes.

- **PORTABLE AND USER-FRIENDLY**

Light-weight 3D scanner & “AirMaster”, intuitive workflow for easy operation.

- **LONG BATTERY LIFE**

Provides up to 3 hours of continuous work, and 12 hours of standby time; replaceable batteries allow for prolonged time of operation.

- **ADVANCED OPERATION**

AirMaster wireless computational processor, with a built-in heterogeneous multi-core SOC processor, offers a calculation of image data completely driven by the hardware.



AirMaster : a wireless computational processor

TECHNICAL SPECIFICATIONS

FREESCAN X5+/X7+

| | FreeScan X5+ | FreeScan X7+ |
|---------------------|---|--|
| Components | AirMaster, USB- air line, Battery*3, Charger | AirMaster, USB- air line, Battery*3, Charger |
| Scan rate | 350,000points/s | 480,000points/s |
| Connection standard | USB3.0/WiFi | USB3.0/WiFi |
| Accuracy | 0.030mm | 0.030mm |
| Volumetric accuracy | 0.02+0.08 mm/m | 0.02+0.06 mm/m |
| Stand-off distance | 300 mm | 300 mm |
| Depth of field | 250 mm | 250 mm |
| Scanning part size | 0.1-8.0m, expandable | 0.1-8.0m, expandable |
| Windows system | windows 7/windows 10 | windows 7/windows 10 |
| PC requirements | RAM: 32G or above; CPU:3GHz or above; Display Card: Nvidia discrete graphics card | |

AirMaster

| | | | |
|-----------------------------|----------------------------|---------------------------|------------|
| Weight | 0.8 kg (including battery) | Battery capacity | 2100 mAh |
| Size | 210 x 100 x 40 (mm) | Sustainable working hours | 3h |
| Operating temperature range | -10 — 40°C | Standby time | 12h |
| Working humidity range | 10%-90% RH | Wireless mode | 802.11n/ac |

Network environment

| | | |
|-----------------|--------------------|---|
| Wireless router | Support 802.11n/ac | The transmission rate is not less than 600Mbps. |
|-----------------|--------------------|---|

*Notice: SHINING 3D reserves the right to explain any alteration of the specifications and pictures.